

# Wild Rover

(♩ = 70)

Musical score for the first system of "Wild Rover". It consists of four staves: a vocal line, a bass line, a piano accompaniment (right hand), and a piano accompaniment (left hand). The key signature has one flat (B-flat) and the time signature is 3/4. The tempo is marked as quarter note = 70. The vocal line begins with a rest followed by the lyrics "Bass I've been a wild rover for". The piano accompaniment includes dynamic markings of *f* and *mf*.

21

Musical score for the second system of "Wild Rover", starting at measure 21. It consists of four staves: a vocal line, a bass line, a piano accompaniment (right hand), and a piano accompaniment (left hand). The key signature has one flat (B-flat) and the time signature is 3/4. The tempo is marked as quarter note = 70. The vocal line continues with the lyrics "And I've spent all my money on whiskey and". The piano accompaniment includes dynamic markings of *mf*.

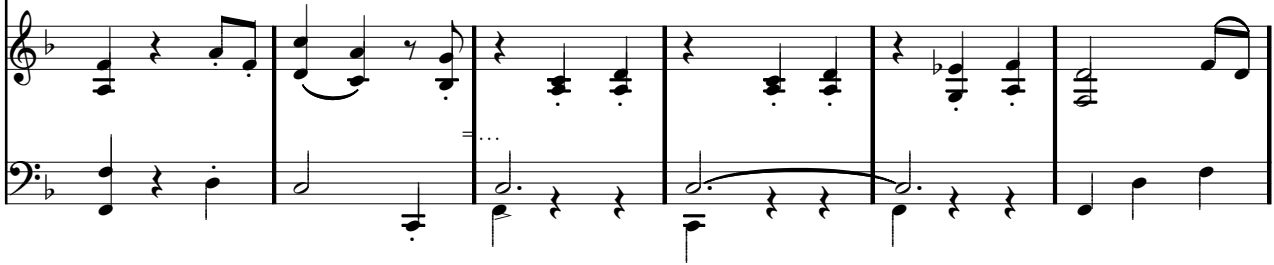
27



beer;



But now I'm re turnin' with gold in great store ....



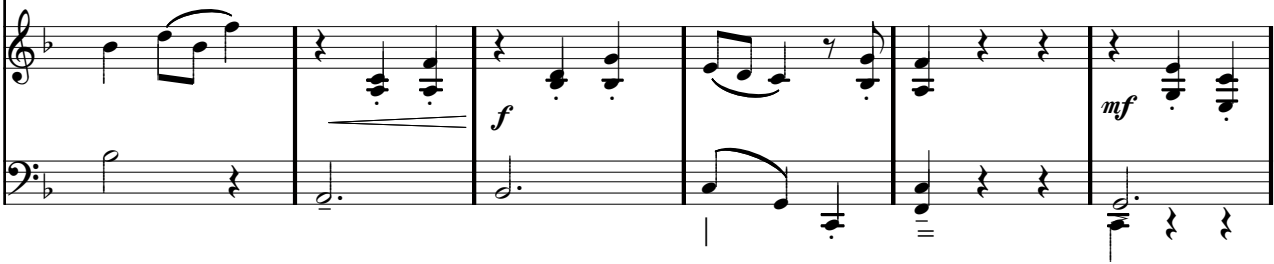
33



And I nev - er will play the wild rov - er no more. And its no,



— And I nev - er will play the wild rov - er no more. And its no, -



39

nay, nev - er, - no, nay, nev - er. no more

nay, nev - er no, nay. nev - er, no more

45

Will I play\_ the wild rave\_ nay nev - er\_ no

Will I play\_ the wild rov - er nay nev - er, - no

52

*mp*

more. pum pum pum pum pum pum pum

*mf*

more. I went in „ to an alehouse I used to fre - quent,

*mf*

58

pum Ah, \_ - \_ poor \_ \_ me!

*mf*

And I told the land - la - dy\_ my mon - ey was spent. I

64 *mp* *mf* *f*

pum pum pum pum pum pum "Nay, nay, Such a cus - tom like  
"If = - : \_ - - :"

asked her for cred - it, she answered me: "Nay, \_ \_ Such a cus - torn like

70 *mf* *mf*

yours I could have an - y day." no, nay, no, nay nev - er, no nev - er,  
yours I could have an - y day."And its no, nay, nev - er-

77 *f* *mf*

no nev - er, no more, no more ore, Will I play the wild rove r -

*f* *mf*

na, nay, nev er no more, no more, Will I play the wild rov - er

84 *f*

- nay nev - er, no more.

*f*

- nay nev - er, no more.

91

Then I took sov'reigns bright sov'reigns

Then out of my pocket I took sov'reigns bright, -

97

bright, "Oh, oh, \_\_\_\_\_ good --- ness me!" She said, \_\_\_\_\_

And the land lady's eyes - o - pened wide with de - light She -

- "I have wines of the best, of the best, And the words that I  
 said, "I have whiskey\_ and wines of the best. And the words that I-

109

spoke, they were on - ly in jest." no, nay, no, nay, nev - er, no  
 spoke, they were on - ly in jest."And it's no, nay, nev - er,-



nev - er, no nev - er, no more, no more, Will I play - the wild

— no, naynev - er, no more, no more, Will I play the wild

*mf*

*f*

*mf*

*f*

*mf*

122

rov - er - nay nev - er, no more.

rov - er - nay nev - er no more.

*f*

*f*

*f*

*mf*

I'll go home, - confess what I've done, \_\_\_ And I'll ask them to

*mf*

I'll go home to my parents confess what I've done, \_\_\_ And I'll ask them to

*mf*

136

*f*

par-don their son. - And if they ca-ress me as oft times be -

*f*

par-don their prod-i-gal son. And if they ca-ress me as oft times be -

*f*

fore, I nev - er play the wild rov-er no more. And its no,

fore, Sure I nev - er will play the wild rov er no more. And its no, -

The first system consists of two vocal staves and two piano accompaniment staves. The vocal staves are in treble and bass clefs, respectively. The piano accompaniment is in bass clef. The music is in a key with one flat (B-flat) and a 4/4 time signature. The lyrics are: "fore, I nev - er play the wild rov-er no more. And its no," for the top voice and "fore, Sure I nev - er will play the wild rov er no more. And its no, -" for the bottom voice. The piano accompaniment features chords and moving lines in both hands.

150

nay, nev - er no, nay, nev - er. no more, Will I

nay, nev--er no, nay, nev - er, no more, Wiil I

The second system starts at measure 150. It features two vocal staves and two piano accompaniment staves. The vocal staves are in treble and bass clefs. The piano accompaniment is in bass clef. The lyrics are: "nay, nev - er no, nay, nev - er. no more, Will I" for the top voice and "nay, nev--er no, nay, nev - er, no more, Wiil I" for the bottom voice. The piano accompaniment includes dynamic markings: *mf* (mezzo-forte) and *f* (forte). The music continues with vocal lines and piano accompaniment.

157

play - the wild rov - er\_\_ nay, nev--er no more.

play\_\_ the wild rov - er\_\_ nay, nev--er no more.

164

no, nay. no, nay, nev - er, no nev - er, no, nev - er, no

And its no, nay, nev----er no, nay, nev - er no

more, no more, Will I play - the wild rover nay, nev - er,

more, no more, Will I play the wild rov-er... nay, nev - er,

Dynamic markings: *sub. f*, *f*, *p*, *sub. f*

178

nay, no, nev er. nay, no, nev - er. nay nev - er, no more!

nay, no, nev - er, nay, no, nev - er, nev - er, no more! -

Dynamic markings: *ff*, *ff*